



NY Thermal Inc.
Tel: (506) 657-6000
Toll Free: 1-800-688-2575
Fax: 1-506-432-1135
Web: www.nythermal.com
Email: info@nythermal.com

Lx500-800 HX ASSEMBLY c/w Burner

Applicable Boiler Models

- LX500
- Lx600
- Lx700
- Lx800

Kit Contents

- 84005 Heat Exchanger Assembly for Lx700-800 boilers **OR**
- 84312 Heat Exchanger Assembly for Lx600 **OR**
- 84311 Heat Exchanger Assembly for Lx500
- 14" Orange wire c/w female disconnects
- 2 x 3' Foil Tape

Tools Required

- Phillips #2 screwdriver
- 1/4" nut driver or wrench
- 5/16" nut driver or wrench
- Pipe wrench
- Torx T25 Torx T20 Screwdriver
- Saw to remove venting
- Adjustable wrench
- 10mm wrench
- 7/16" Wrench
- 1/2" Wrench
- 9/16" Wrench

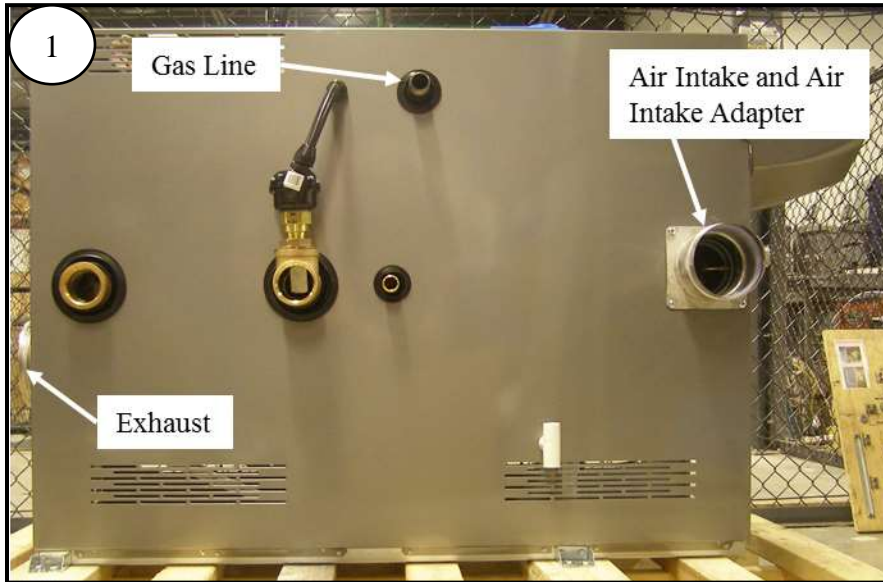


Lx Heat Exchanger



WARNING

This boiler must be service by a qualified heating technician. Failure to properly maintain or service this appliance may result in property damage, serious injury to occupants or, death.



Turn off power and gas to the boiler.

Drain the boiler; use a wet/dry vacuum to help remove excess water.

Disconnect the gas line.

Disconnect the air intake and exhaust.

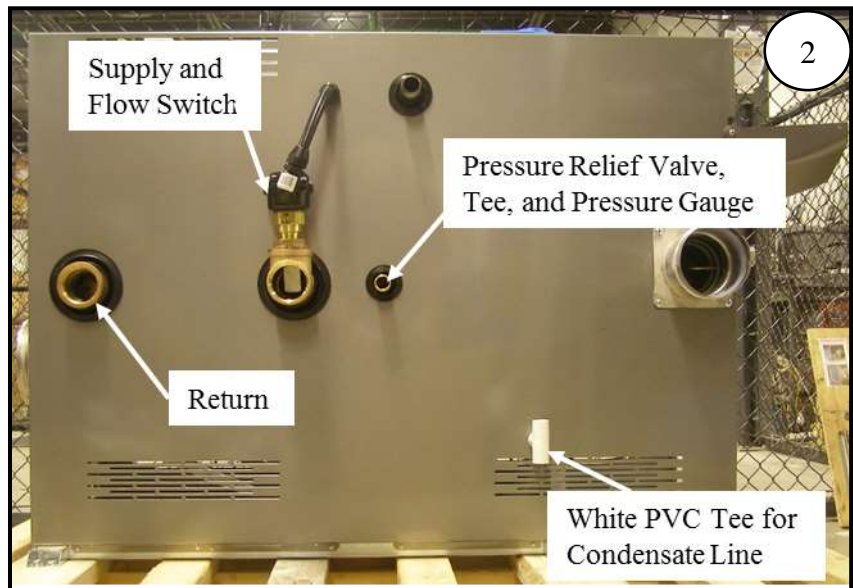
Remove the air inlet adapter.

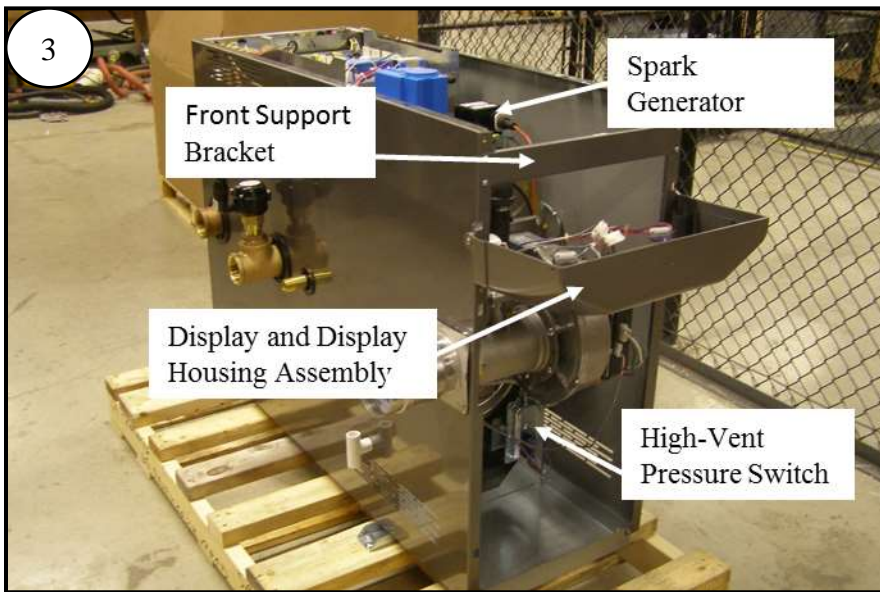
Disconnect the supply and return pipes.

Disconnect the flow switch.

Disconnect the pressure relief valve, tee, and pressure gauge.

Disconnect the condensate line from the white PVC 1/2" Tee on left hand side of jacket.





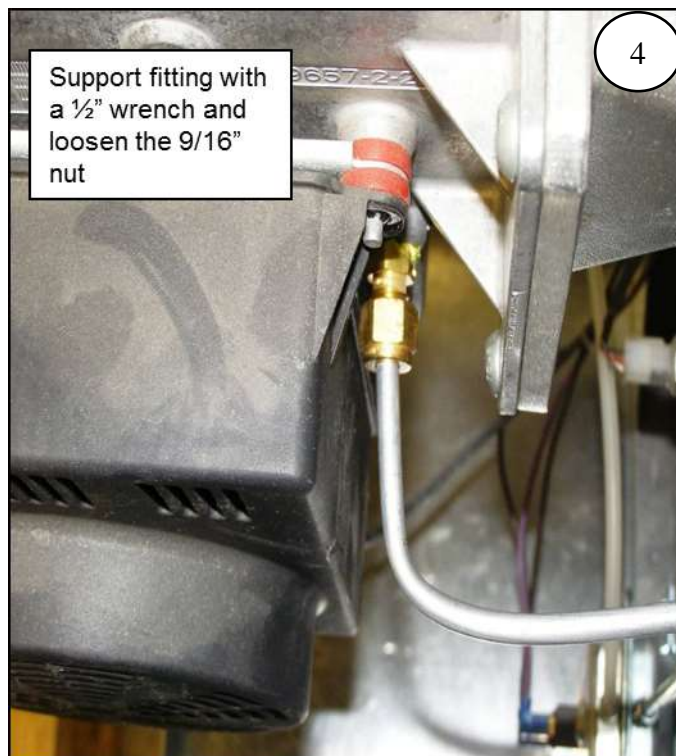
Remove the front support bracket.

Remove the display and display housing assembly.

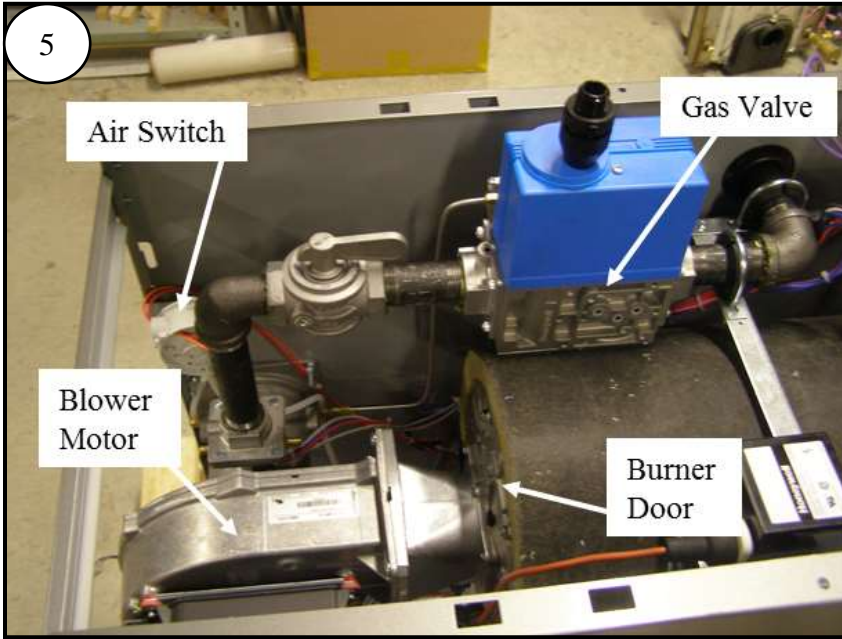
Remove wiring from high-vent pressure switch and spark generator.

Disconnect the metal tubing from between the high-vent pressure switch and the blower.

IMPORTANT Loosen the compression fitting at the high-vent pressure switch and the blower. Support the brass fitting with a 1/2" wrench while loosening the compression fitting with a 9/16" wrench.

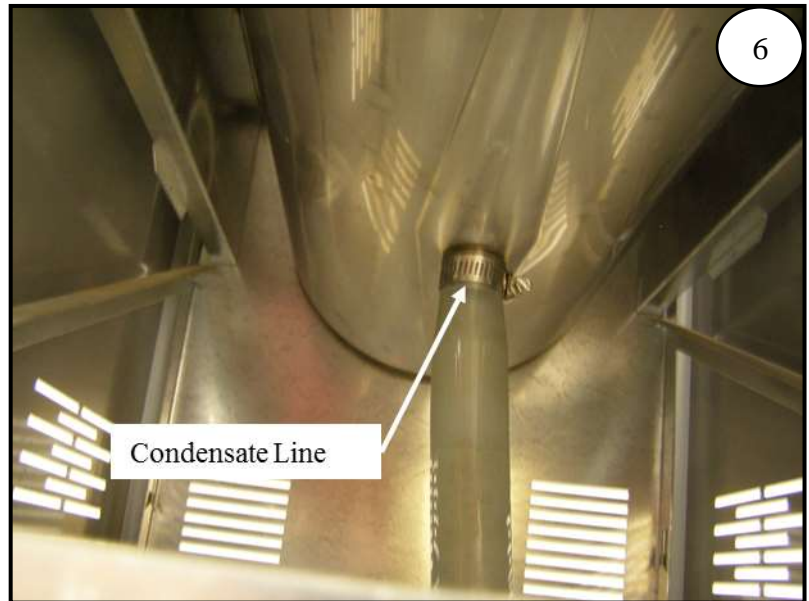


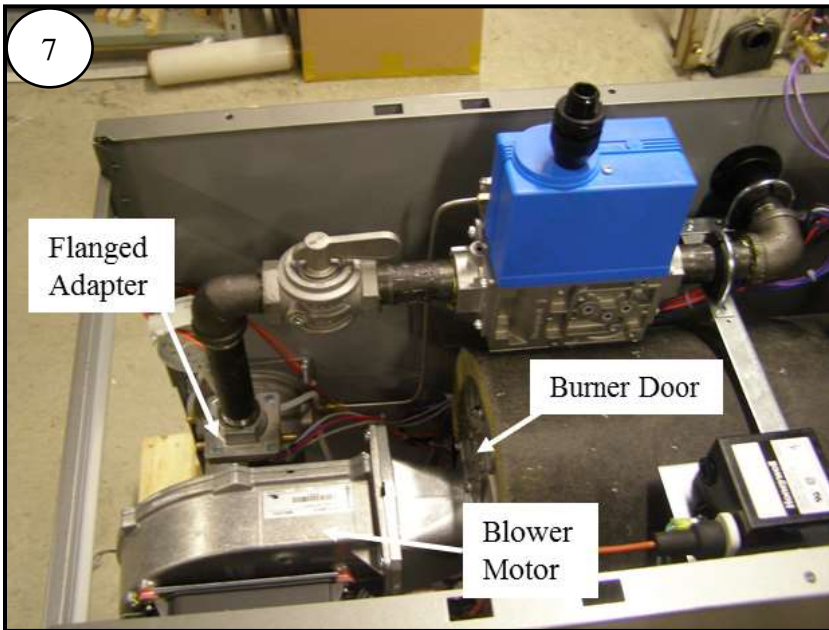
WARNING **Metalic Air Switch Tubing** – The metalic air switch tubing contains air and fuel while the burner is operating. Failure to properly secure this tubing and test for leaks may result in gas leakage which could result in serious injury or death.



Remove all plugs, hoses and electrical connectors from the burner door, gas valve, blower motor, air switch, and all sensors attached to the heat exchanger.

Disconnect the condensate line from the bottom of the heat exchanger.





Disconnect gas line by disconnecting the flanged adapter between gas valve and the venturi adapters.

Remove the burner door and blower motor as an assembly.

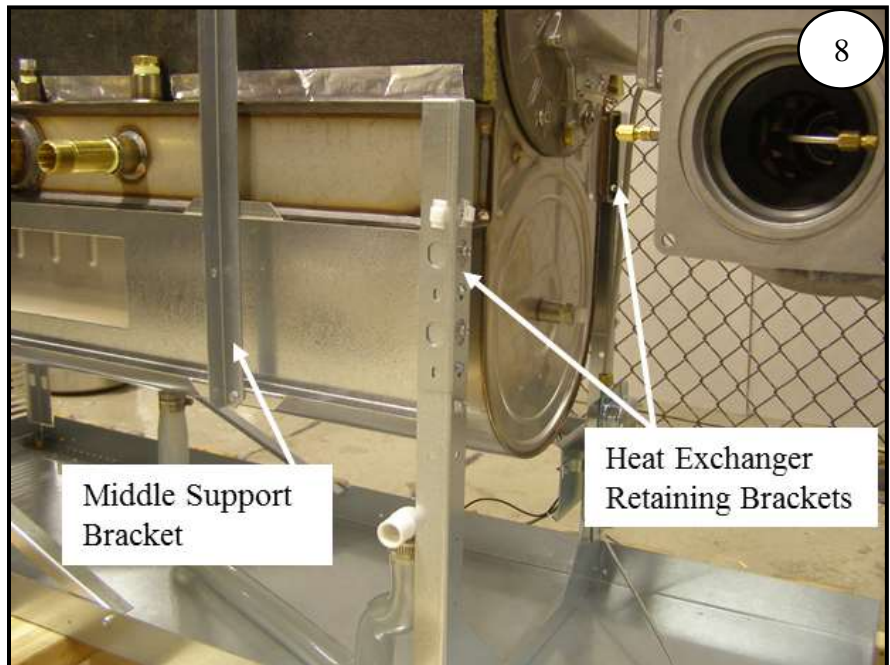
Remove all sensors, fittings, and air vent on the heat exchanger, reinstalling them on the new heat exchanger after it is in place.

Remove the left hand middle support bracket only.

Remove the front heat exchanger retaining brackets on each side of the heat exchanger.

Have a helper support the gas valve and slide the heat exchanger forward off its cradle.

Note: Remove the insulation blanket from the old heat exchanger and install it on the new heat exchanger.

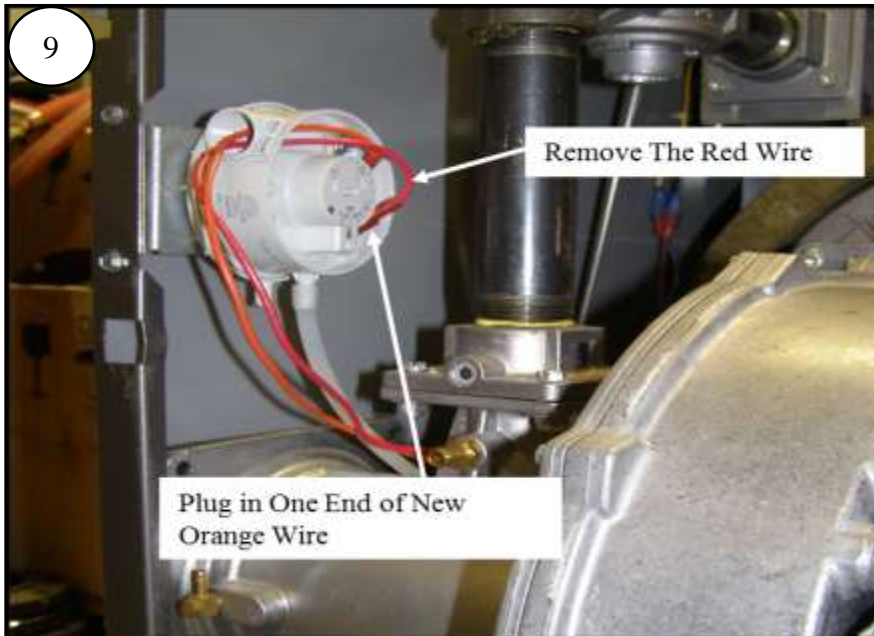


Reassemble the boiler in the reverse order.



Removing the Heat Exchanger – The heat exchanger is heavy and will require at least two people to remove and re-install. Failure to properly support the heat exchanger may result in minor to moderate injury or property damage.

Reset Safety Thermostat – Boilers not originally equipped with the Reset Safety Thermostat ***MUST*** be updated using the following wiring instructions:

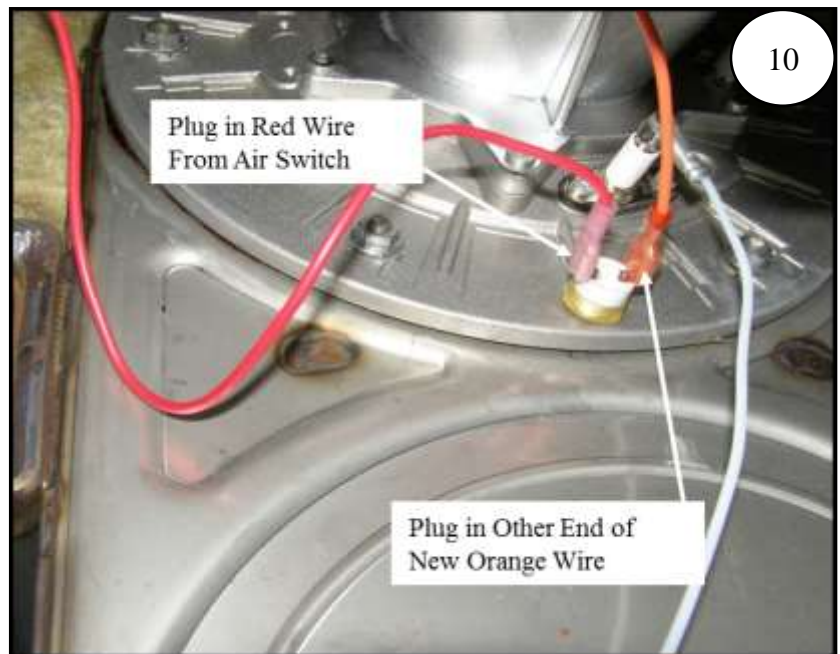


Remove the red wire from the air proving switch.

Plug one end of the new orange wire onto the pin the red wire was attached to on the Air Switch.

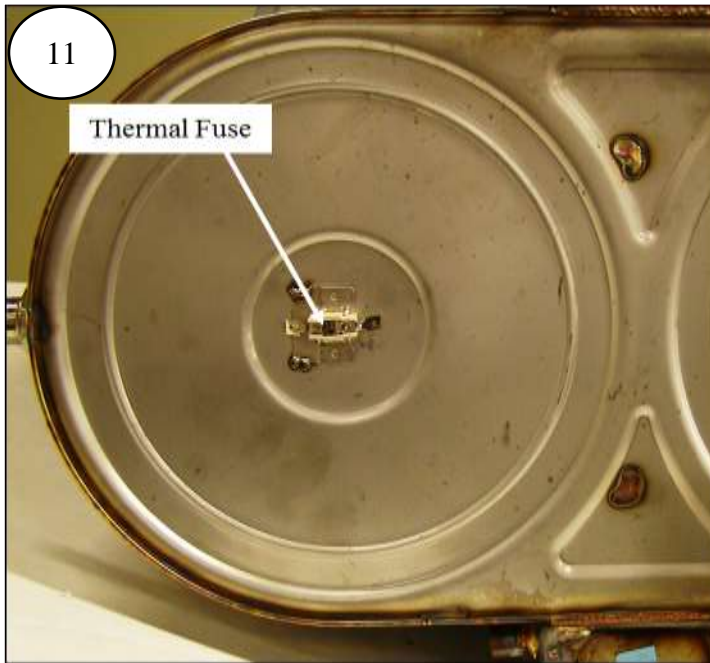
Plug the red wire onto Reset Safety Thermostat.

Plug the other end of the orange wire onto the second pin on the Reset Safety Thermostat.





Reset Safety Thermostat - Failure to correctly wire the Reset Safety Thermostat may result in serious injury or death.



Some boilers were not originally equipped with the rear mount thermal fuse. If your boiler was ***not*** equipped with the rear mount thermal fuse, remove the new fuse.