

NY Thermal Inc.
Tel: (506) 657-6000
Toll Free: 1-800-688-2575
Fax: 1-506-432-1135
Web: www.nythermal.com
Email: info@nythermal.com

#86289

Blower Wiring Retrofit Kit (J9)



This boiler must be serviced by a qualified heating technician. Failure to properly maintain or service this appliance may result in property damage, serious injury to occupants, or death.



The installation of this kit must be performed by a qualified boiler technician. Installing this kit without the proper qualifications and training is hazardous and may result in property damage or death.

Applicable Boiler Models

- TX All Models
- Vmax All Models
- FTV All Models

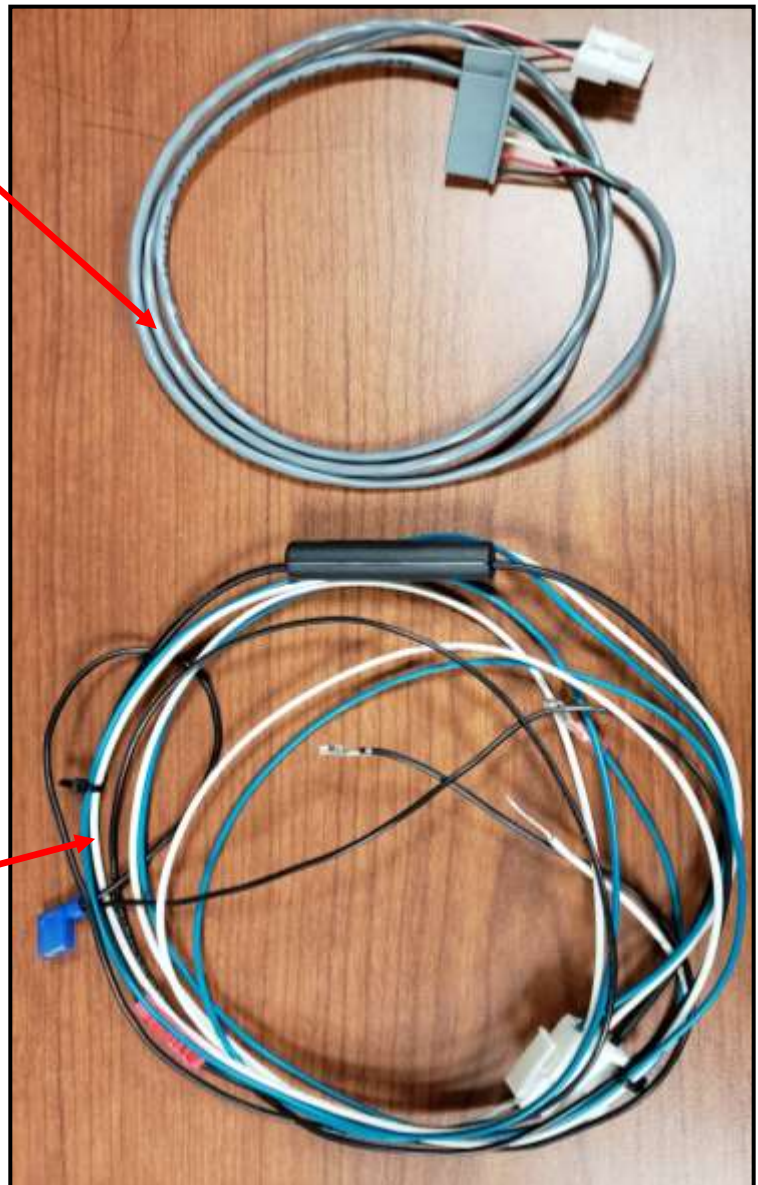
Kit Contents

- Blower Control Harness
- Blower Power Harness
- Fuse
- Zip-ties 5qty

Tools Required

- Flat head screwdriver
- Terminal screwdriver
- Wire cutters

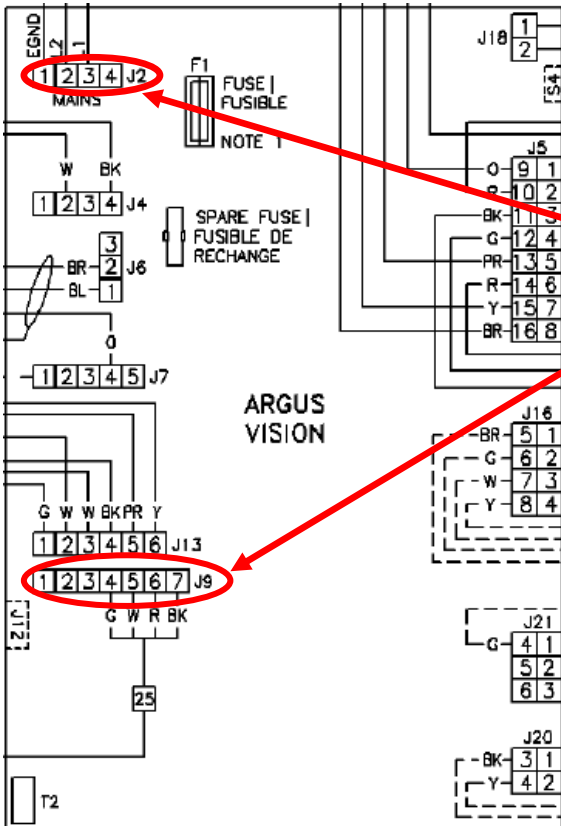
Control Harness



Power Harness



Turn off power at the source ie.circuit breaker or electrical service switch. Failure to do so will result in an electrical shock when removing wiring from the display service switch.



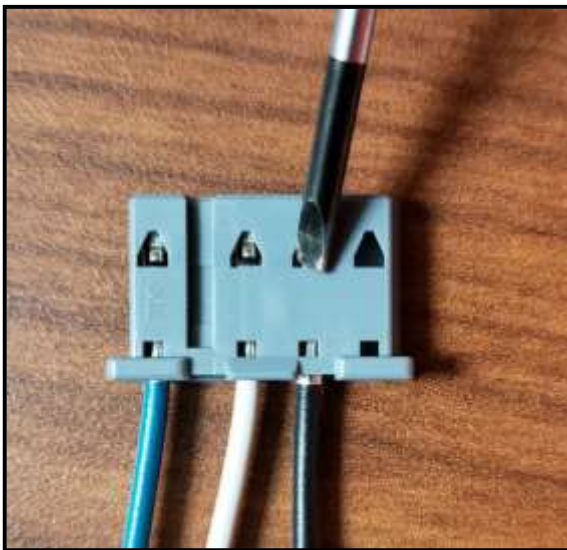
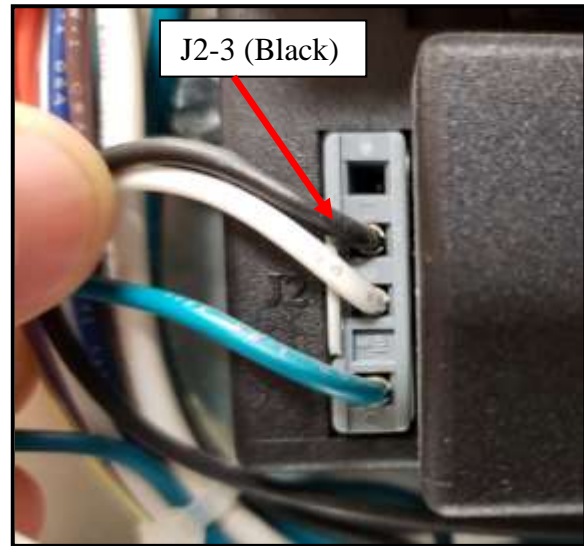
Replacement Instructions

- 1) Turn off power, at the circuit breaker, and gas to the boiler.
- 2) Remove the **J2** harness from the control board.
- 3) Remove the **J9** harness from the control board.

- 4) Remove both wire harnesses (control and power) from the blower.
- 5) Replace the J9 harness with the updated control harness and connect other end of harness to the blower.



6) Remove the black wire from the J2-3 terminal.

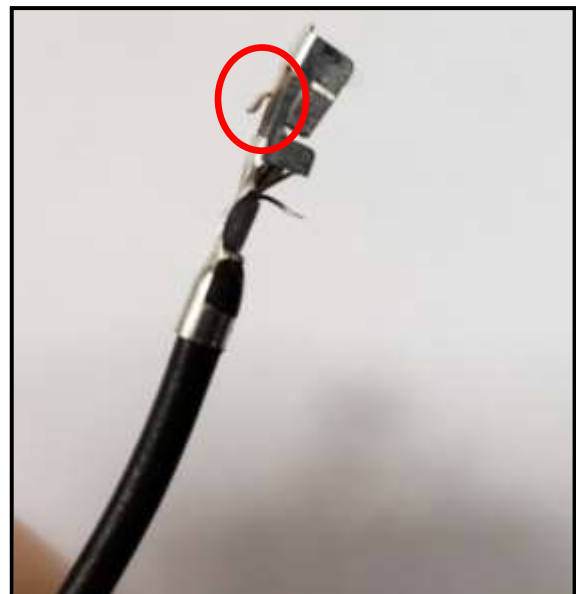


7) Depress the locking clip with a terminal screwdriver or a small screwdriver in order to remove it from the clip.

8) Follow the wire that was removed from J2-3 to the power switch on the display and remove the flag connector.

9) Insert the loose black wire from the NEW power harness into terminal J2-3, making sure that the locking clip is pried up.

10) Give the black wire a light tug to assure it is securely locked in place inside the J2 clip.





11) Connect the blue flag connector to the back of the power switch on the display.

12) Loosen the set screw on either L2 Neutral terminals of the terminal strip. Combine the loose white wire from the new harness as shown.





13) Reconnect white wires to L2 Neutral and tighten set screw in order to fasten them in place.

14) Connect loose green wire with ring terminal to ground.



15) Zip-tie any excess wire together and assure there is no tension on any wires.

