



NY Thermal Inc.
Tel: (506) 657-6000
Toll Free: 1-800-688-2575
Fax: 1-506-432-1135
Web: www.nythermal.com
Email: info@nythermal.com

**85022 / 85023 / 85024 / 85025 / 85026/ 85760/ 87504/ 87505/
87506/87507/87508**

**Tx151-200 Heat Exchanger Assembly, ASME
Post Serial # 72000
c/w Burner Door and Flue Box**



This boiler must be service by a qualified heating technician. Failure to properly maintain or service this appliance may result in property damage, serious injury to occupants or, death.



The installation of this kit must be performed by a qualified boiler technician. Installing this kit without the proper background and training is hazardous and may result in property damage or death.

Applicable Boiler Models

- Tx51-200
- Tx151C
- Tx200C

Kit Contents

- 85022/87508 Heat Exchanger Assembly Tx51 **OR**
 - 85023/87507 Heat Exchanger Assembly Tx81 **OR**
 - 85024/85760/87506 Heat Exchanger Assembly Tx101 **OR**
 - 85025/85761/87505 Heat Exchanger Assembly Tx151, Tx151C **OR**
 - 85026/87504 Heat exchanger Assembly Tx200, Tx200C
- Installation Instructions

Heat Exchanger

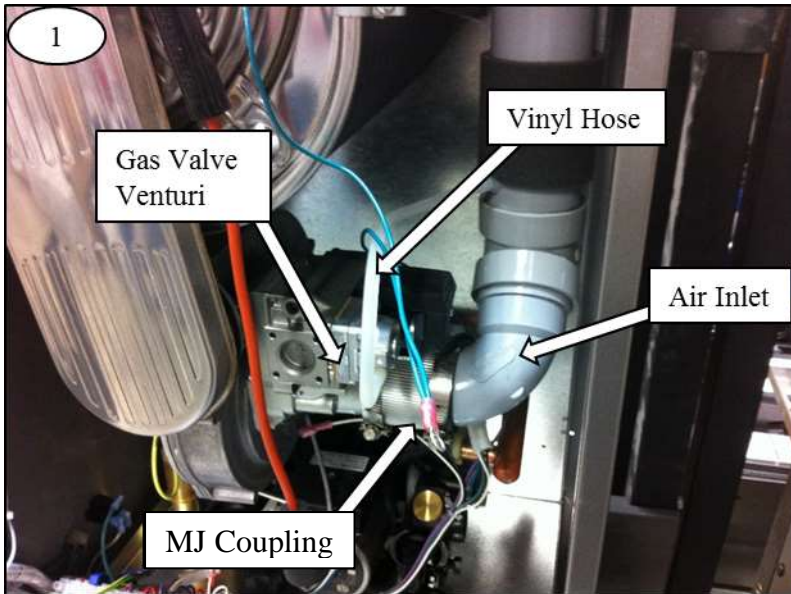


Tools Required

- Needle Nose Pliers
- Phillips #2 screwdriver
- Flat Screwdriver
- 1/4" nut driver or wrench
- 5/16" nut driver or wrench
- 10mm wrench
- 3/8" Wrench
- Pipe wrench
- Combustion Analyzer
- Saw to remove venting
- Adjustable wrench
- Vacuum Cleaner

Disassembly Instructions

- Turn off power and gas to the boiler.
- Drain the boiler: use a wet/dry vacuum to help remove excess water.
- Remove the exhaust venting.
- Remove the gas line from the gas valve.



Remove the vinyl hose from the gas valve.

Remove the air intake from the gas valve Venturi by loosening the MJ coupling.

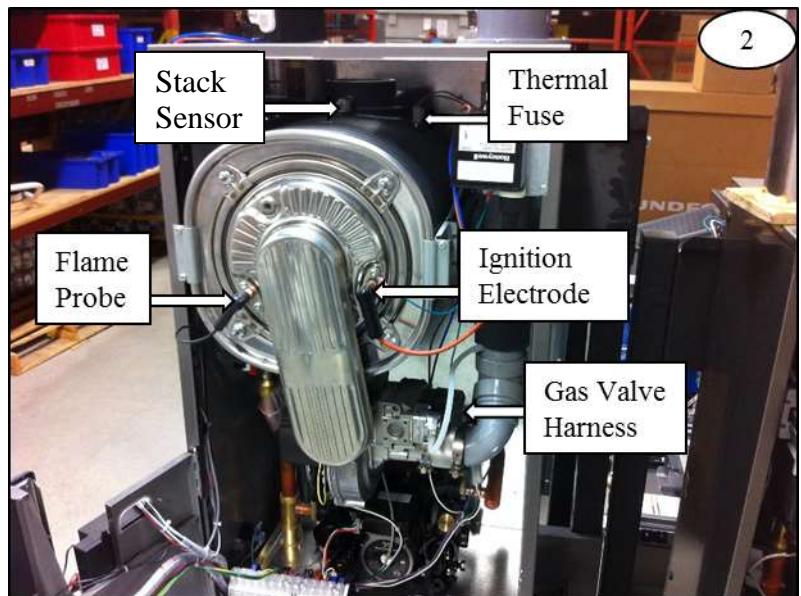
Disconnect the flame probe and ignition electrode cables.

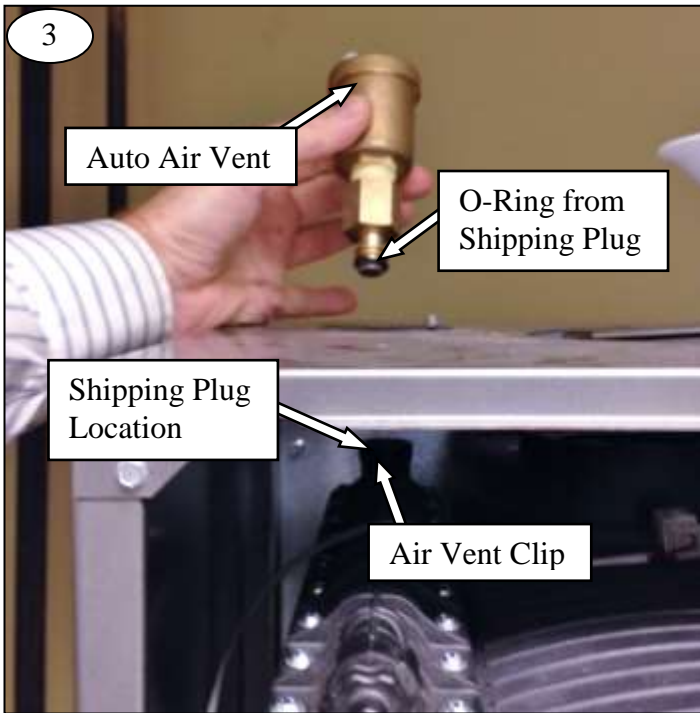
Disconnect the wire harnesses from the gas valve, stack sensor, thermal fuse, and blower motor.

Remove the stack sensor by pressing and turning it counter-clockwise. Install it in the new heat exchanger

NOTICE

Make sure the O-ring remains with the stack sensor.





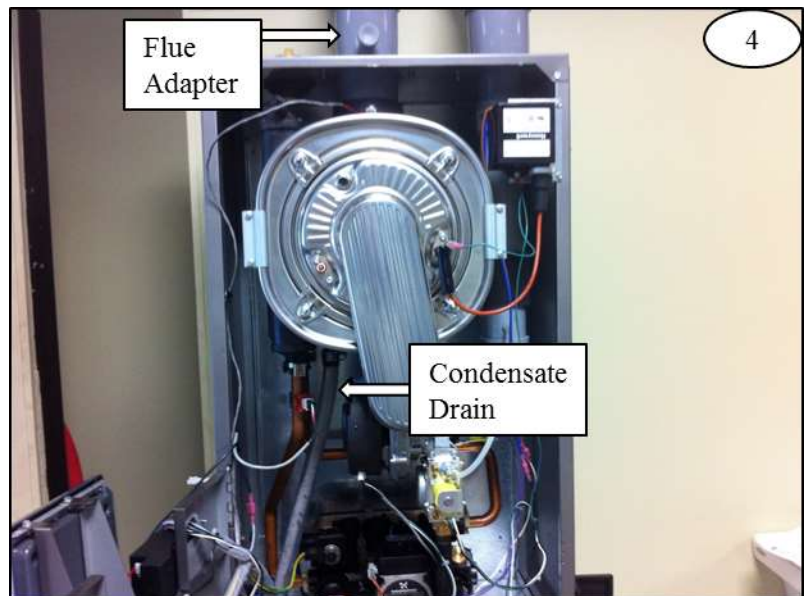
Remove the auto-air vent clip and lift the auto-air vent assembly up to remove it from the heat exchanger.

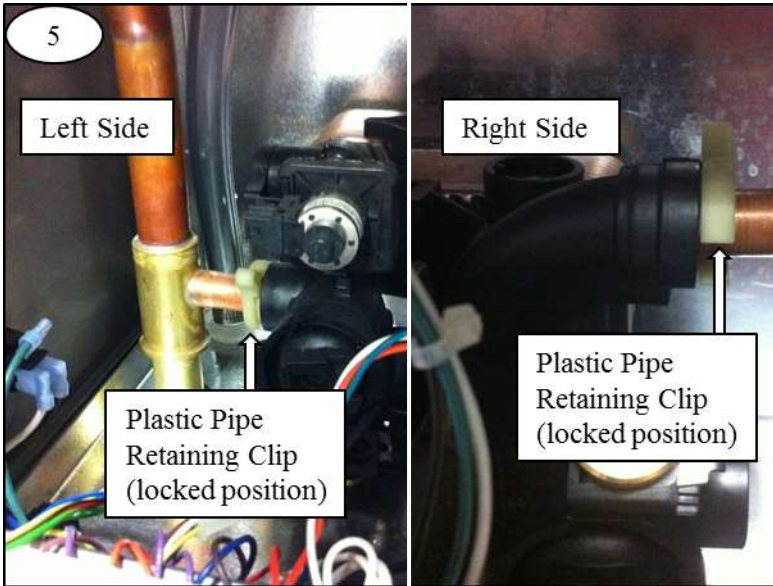
Prior to installing the air vent in the new heat exchanger remove the shipping plug and O-ring. Use the new O-ring from the shipping plug during reassembly.

NOTICE When reinstalling the air vent ensure the new O-ring is in place before inserting the air vent in new heat exchanger.

Remove the flue adapter from the top of the boiler.

Remove the condensate drain from the bottom of the heat exchanger.





Combi Models Tx151C and Tx200C:

Remove the white plastic retaining clips from the copper pipes by rotating the clips counter-clockwise to unlock them.

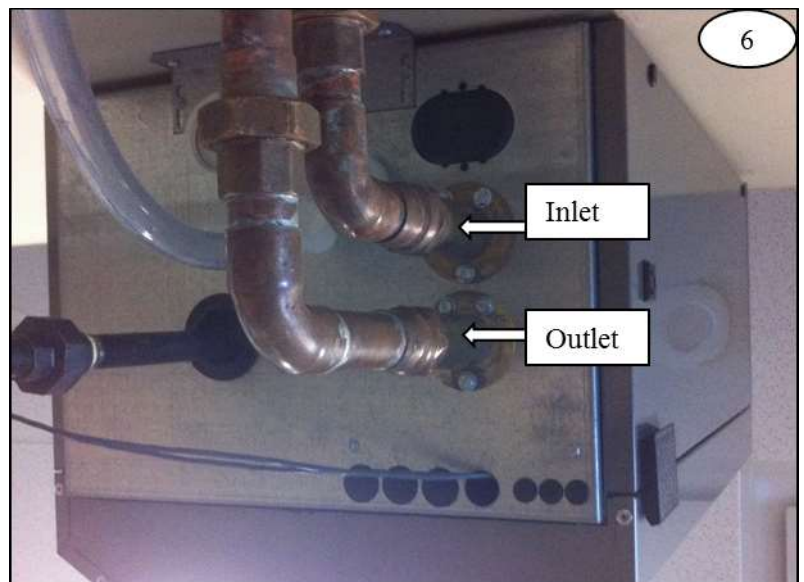
Remove the pipes from the combi block by pulling them away from the combi block.

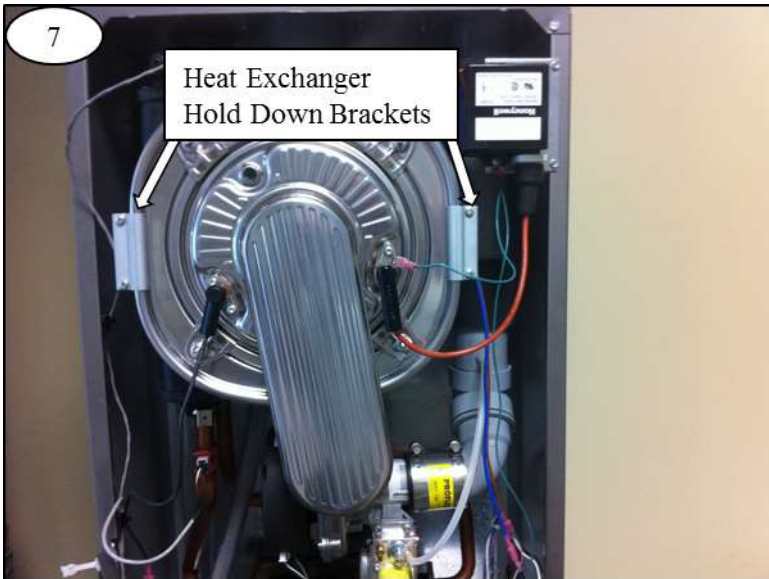
NOTICE When reinstalling the plastic clips ensure they are oriented as shown when locked.

NOTICE It is not necessary to remove the field water connections from the bottom of the combi boiler.

Tx51 - 200:

Remove the water connections from under the boiler and then remove the boiler supply and return pipes.





Remove the heat exchanger hold down brackets.

Remove the heat exchanger, blower motor, and gas valve as an assembly.

Transfer the blower motor and gas valve to the new heat exchanger prior to installing the new heat exchanger.

- Reassemble in reverse order.
- Operate the boiler at high fire and perform a combustion analysis according to the guidelines in the installation and operation manual.

⚠ DANGER

Explosion Hazard – Failure to properly install the combustion blower gasket may result in gas leakage causing serious injury or death.

⚠ WARNING

Combustion analysis – Failure to perform a combustion analysis and adjust the gas valve according to the installation and operation manual will result in boiler malfunction and or excess carbon monoxide production which could result in serious injury or death.

⚠ DANGER

Gas Leakage - Failure to properly reconnect the gas line and check for leaks may result in gas leakage causing serious injury or death.

⚠ WARNING

Flue Gas Leakage -Failure to properly attach the venting or condensate drain and check for leaks may cause flue gas leakage causing serious injury or death.

CAUTION

Water Leakage - Failure to correctly reattach and seal the boiler piping will result in water leakage causing property damage.