

NTI  
Tel: (506) 657-6000  
Toll Free: 1-800-688-2575  
Web: www.NTIboilers.com  
Email:  
Info@NTIBoilers.com.com

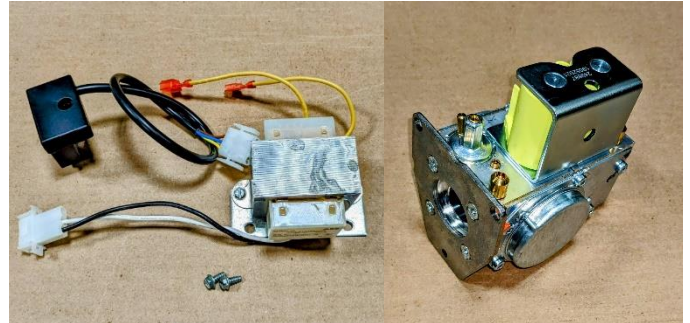
## 87729 120V Gas Valve Kit TFT285-399

### Applicable Boiler Models

- TFT285
- TFT340
- TFT399

### Kit Contents

- 87760 – Gas Valve, 120V, TFT285-399
- 87635 – Transformer, 40VA, (HCT-01A0K01126)
- 87745 – Gas Valve Harness Receptacle Housing (3pos)
- 87746 – Gas Valve Harness Receptacle Pins (Male) (x2)
- 84594 – Disconnect, Male 22-18 Red Molex
- 84606 – Disconnect, Female 22-18 Red Molex
- 85192 – Screw #8 x 18 x ½” Long (x4)
- 88315B – Spark Gen Bracket



120V Gas Valve Kit Contents

### Tools Required

- Pipe Wrench
- Adjustable wrench (for gas line)
- Phillips #2 Screwdriver
- Torx #25 screwdriver
- ¼” Nut driver

### WARNING

The installation of this transformer must be performed by a qualified gas technician in accordance with these instructions. Installing this valve without the proper background and training is hazardous and may result in property damage serious injury or death.

### Gas Valve Wiring Replacement Instructions

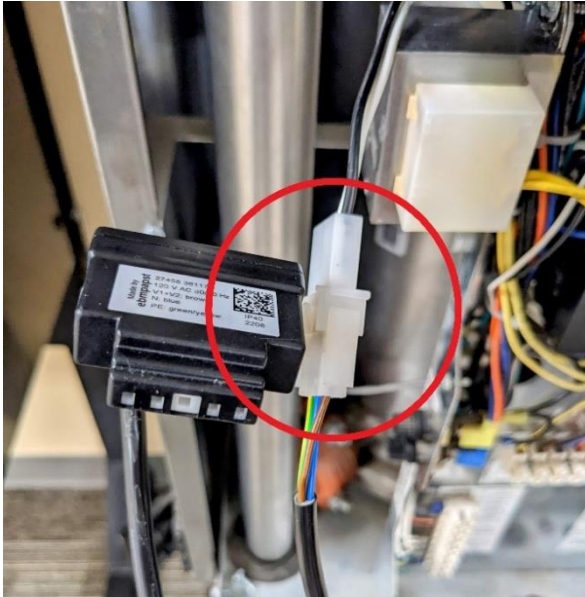
- 1) Install transformer on bracket.
- 2) Place bracket on left side of control panel, under ignition coil with yellow cables facing front side. Use the existing mounting holes.



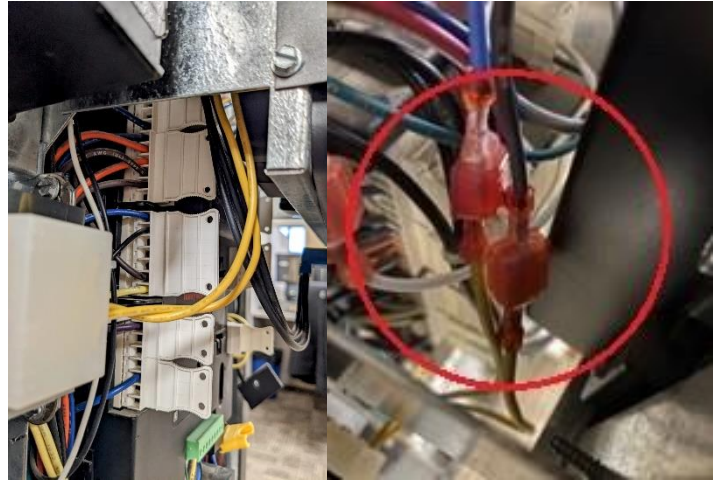
### 120V Transformer in mounted position



- 3) Remove the 2-wire gas valve harness. Blue and Brown wires remain connected to boiler.
- 4) Plug the new gas valve harness into black and white wire connector on transformer as shown



- 5) Connect brown and blue wires from step 3 to yellow wires on transformer. Wires will feed behind control panel.



- 6) Connect harness to gas valve and proceed with combustion calibration procedure.



**Feedback Tube** – reconnect the tubing from the air-inlet to the gas valve feedback port. Failure to properly reconnect the feedback tube will negate the boiler’s blocked vent safety shutoff mechanism, and could lead to incorrect combustion resulting in property damage, serious injury or death.

**Combustion Calibration Procedure**

To calibrate burner combustion, perform the following procedure using a calibrated combustion analyzer capable of measuring CO<sub>2</sub> and CO from a Natural Gas or Propane burning appliance:

1. **Set analyzer** to the appropriate fuel (Natural Gas or Propane).
2. **Gas Line Pressure Test** – monitor gas line pressure throughout all combustion tests and verify it is maintained within tolerance. See *Gas Line Pressure Test* below.
3. **Set Throttle Screw** – operate burner to the maximum modulation rate (see Table 2); set combustion according to Table 1 using the Throttle Screw; allow time for the analyzer readings to stabilize between adjustments – record CO<sub>2</sub> value. See *Throttle Screw Adjustment* below.
4. **Set Offset Screw** – operate burner to the minimum modulation rate (see Table 2); using the Offset Screw, set the CO<sub>2</sub> to 0.4-0.8% lower than the value obtained during the maximum modulation rate test (e.g., if CO<sub>2</sub> at Max = 9.5%, then CO<sub>2</sub> at Min must = 8.8-9.1%). See *Offset Screw Adjustment* below.



**Combustion Calibration is mandatory** upon installation and during each annual service. Failure to perform the Combustion Calibration in accordance with these instructions may result in incorrect combustion leading to burner damage or excessive Carbon Monoxide concentrations causing property damage, personal injury, or death.



**Carbon Monoxide** - Never leave the unit operating while producing Carbon Monoxide (CO) concentrations in excess of 175 ppm. Failure to follow this warning may result in serious injury or death.

## Throttle Screw Adjustment

The gas valve Throttle Screw (see Figure 2) is used to calibrate the CO<sub>2</sub> concentration with the burner operating at or near the maximum modulation rate (see Table 2). Turning the Throttle Screw in (clockwise) decreases the CO<sub>2</sub> concentration. Turning the Throttle Screw out (counterclockwise) increases the CO<sub>2</sub> concentration. Typical adjustment required is 0 – 1/2 of a turn in or out from the factory setting.

**NOTE:** Calibration of the Throttle Screw should only be performed with the burner operating at or near the maximum modulation rate (see Table 2).

**WARNING** Adjustments to the **Throttle Screw** may only be made by a qualified gas technician using a calibrated combustion analyzer capable of measuring CO<sub>2</sub> and CO. Adjustments may only be performed if the gas line pressure is maintained above minimum levels throughout the duration of the test (see Table 1). Failure to follow these instructions may result in serious injury or death.

## Offset Screw Adjustment

The gas valve Offset Screw (see Figure 2) is used to calibrate the CO<sub>2</sub> offset at minimum modulation vs. maximum modulation. Turning the Offset Screw in (clockwise) increases the CO<sub>2</sub> concentration at minimum modulation rate. Turning the Offset Screw out (counterclockwise) decreases the CO<sub>2</sub> concentration at minimum modulation rate. Typical adjustment required is 0 - 1/8<sup>th</sup> of a turn in or out from the factory setting.

**NOTE:** Calibration of the Offset Screw must only be performed with the burner operating at the minimum modulation rate (see Table 2).

**WARNING** Adjustments to the **Offset Screw** may only be made by a qualified gas technician using a calibrated combustion analyzer capable of measuring CO<sub>2</sub> and CO, and only with the burner at the minimum modulation rate (see Table 2). Attempting to set the Offset Screw while the burner is operating at a modulation rate other than the minimum will result in incorrect combustion and may lead to burner damage or excessive CO.

## Gas Line Pressure Test

The boiler gas valve is equipped with a line pressure test port; see Figure 2. Use the following procedure to measure the gas line pressure to the boiler to ensure it falls within the range given in Table 1:

1. Turn the supply of gas to the boiler off.
2. Open the bleed screw of the line pressure test port approximately 1-1/2 turns. This port is directly connected to the gas line feeding the boiler. See Figure 2.
3. Force 1/4" ID tubing over the housing of the line pressure test port; install the other end of the tubing to an appropriate line pressure test gauge or manometer. Ensure both ends of the tubing make a tight connection.
4. Open the supply of gas to the boiler and check for gas leaks.
5. Observe the line pressure under static conditions and compare it to Table 1. The pressure will be greatest under static conditions.
6. With all other gas appliances in the application running, operate the burner to the maximum firing rate (See Table 2) and compare the observed line pressure with Table 1. The pressure will be lowest during the maximum flow of gas.
7. Adjust the gas line pressure to ensure the parameters in Table 1 are attained under all conditions. If possible, adjust the line pressure to the "Nominal/Desired" value listed in Table 1, while the unit is operating at the maximum modulation rate, see Table 2.
8. Continue observing the gas line pressure until the completion of the combustion analysis in case adjustments need to be made.
9. Complete pressure testing, and then return the bleed screw of the Line Pressure Test Port to the closed position.

**NOTICE** The line pressure is a function of the gas supply and is affected solely by field provided parameters such as line size and regulator settings. Under no circumstances can the boiler gas valve influence or be used to adjust the gas line pressure.



Failure to close the bleed screw of the Line Pressure Test Port will cause a severe leakage of gas, resulting in a fire or explosion causing property damage, serious injury or death.

**Table 1 Line Pressure and Combustion Parameters**

Gas	Line Pressure (inches w.c.)			CO <sub>2</sub> (%)		CO (ppm) Max.
	Nominal/Desired	Min.	Max.	Min.	Max.	
Natural	7	4	10.5	8.5	9.5	175
Propane	11	8	13	10	11	175

**Notes:**

<sup>1</sup> Combustion calibration must only be performed with the burner operating at maximum modulation rate; when tested at minimum modulation rate the CO<sub>2</sub> must be 0.4-0.8% lower than CO<sub>2</sub> at maximum modulation rate.

**Table 2 Minimum and Maximum Modulation Rates**

Model	Min. Modulation Rate (RPM)	Max. Modulation Rate (RPM)
TFT285	1000	7300
TFT340	1100	6650
TFT399 <sup>1</sup>	1050	7800 (7500 – LP)

**Note:** <sup>1</sup> Modulation rates specified for model Tft399 are for units with serial numbers greater than 90974; consult earlier instruction manuals for modulation rates for earlier serial numbers.

**Figure 1 Tft 285-399 Gas Valve Adjustment (Tft340-399 Illustrated)**

