

NY Thermal Inc.
 Tel: (506) 657-6000
 Toll Free: 1-800-688-2575
 Fax: 1-506-432-1135
 Web: www.ntiboilers.com
 Email: info@ntiboilers.com

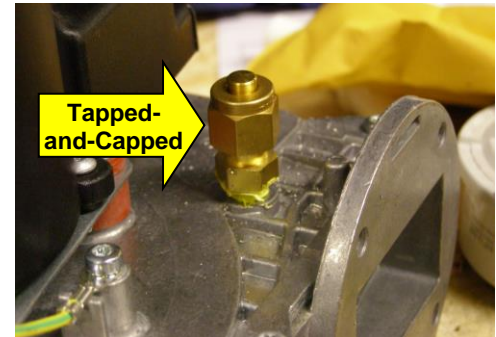
82661-1

EBM BLOWER REPLACEMENT KIT

Model Numbers: Ti200, Lx150E-300 (not used on Lx150), Tft155-250

Installer Responsibilities

As the installing technician, it is your responsibility to ensure the installation is performed in accordance with the NTI Installation Instructions included with the blower kit. This blower is used with several Trinity models, it is tapped-and-capped for easy installation with those models that use a high-vent pressure switch and fuel/gas tubing assembly. **DO NOT REMOVE CAP** if blower is being installed on a Trinity Ti200, Lx150E, Lx200, Tft155, Tft175, Tft200, Or Tft250 model.



Kit Contents (P/N 82661-1)

- EBM Blower RG148/1200-3633 (tapped-and-capped)
- Installation Instructions



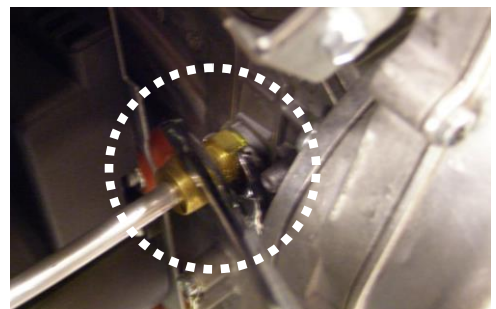
Explosion Hazard (Lx300) - The aluminum tube connecting the blower and the metallic high-vent pressure switch contains a fuel/air mixture. Refer to the **Installation Procedure** below for instructions on disconnecting and reconnecting the aluminum tubing assembly. Failure to follow these instructions may result in serious injury or death.



Lx300 Models - Additional installation steps are required for units that have a high-vent pressure switch. See steps 3, 4 & 6 in the Installation Procedure for specific instructions.

Installation Procedure

1. **Post Purge** - Initiate a post-purge cycle to clear any gas from blower and the combustion chamber.
2. **Power Down** - To turn off power: a) locate the Manual Gas Shutoff Valve outside the unit, b) turn the valve off, and c) shut off electrical power to the appliance. Refer to the section on "Lighting/Shutting Down the Appliance" on the facing page.
3. **Remove Brass Cap (Lx300)** - On the new blower, support the brass fitting body threaded into the blower with a 1/2" wrench to keep it from rotating, then loosening the brass cap with a 9/16" wrench as shown.
4. **Disconnect High Vent Pressure Tube (Lx300)** - Loosen the compression fitting at the high-vent pressure switch using a 1/2" wrench to. At the blower end, support the brass fitting body with a 1/2" wrench to keep it from turning and loosen the compression fitting nut with a 9/16" wrench. Remove tubing assembly.
5. **Remove Blower** - Unplug the two blower wires, remove blower screws and blower. Examine blower gasket for defects before installing new blower. Attach new blower, secure in place with blower screws, plug blower wires back in.
6. **Reconnect High Vent Pressure Tube (Lx300)** - Reconnect the metallic tube between the blower and the high-vent pressure switch using the same procedure used to disconnect the tube, where the brass fitting body at the blower is supported to ensure it remains stationary and does not rotate during reconnection.
7. **Power Up** - To turn on power: a) turn on electrical power to the appliance, and b) turn the Manual Gas Shutoff Valve outside the unit to the on position. Refer to section "Lighting/Shutting Down the Appliance".



8. **Leak Check** - Fire up boiler, check for gas leaks while operating (i.e. blower, tubing assembly connections).

Lighting / Shutting Down the Appliance



Read Before Proceeding - If you do not follow these instructions exactly, a fire or explosion may result causing property damage, serious injury or death.

FOR YOUR SAFETY, READ BEFORE OPERATING

- A) This appliance does not have a pilot. It is equipped with an ignition device which automatically lights the burner. Do not try to light the burner by hand.
- B) BEFORE OPERATING smell all around the appliance area for gas. Be sure to smell next to the floor because some gas is heavier than air and will settle on the floor.
WHAT TO DO IF YOU SMELL GAS:
 - Do not try to light any appliance.
 - Do not touch any electric switch.
 - Do not use any phone in your building.
 - Immediately call your gas supplier from a neighbor's phone. Follow the gas supplier's instructions.
 - If you cannot reach your gas supplier, call the fire department.
- C) Use only your hand to push in or turn the gas control knob. Never use tools. If the knob will not push in or turn by hand, don't try to repair it, call a qualified service technician. Force or attempted repair may result in a fire or explosion.
- D) Do not use this appliance if any part has been under water. Immediately call a qualified service technician to inspect the appliance and to replace any part of the control system and any gas control which has been under water.

OPERATING INSTRUCTIONS

1. STOP! Read the safety information above very carefully.
2. Set the thermostat to lowest setting. Turn off all electric power to the appliance.
3. This appliance does not have a pilot. It is equipped with an ignition device which automatically lights the burner. Do not try to light the burner by hand.
4. Turn the manual gas valve to the OFF position. Remove front access panel.
5. Wait five (5) minutes to clear out any gas. Then smell for gas, including near the floor. If you smell gas, STOP! Follow "B" in the safety information above. If you don't smell gas, go to the next step.
6. Turn the manual gas valve ON. Wait an additional five (5) minutes smelling for gas.
7. Replace the front access panel.
8. Set thermostat to highest setting. Turn on all electric power to the appliance.
9. Ignition sequence is automatic. Combustion will occur after a brief fan purge.
10. If ignition does not occur, follow the instructions "To Turn Off Gas To Appliance" and call your service technician or gas supplier.

TO TURN OFF GAS TO THE APPLIANCE

1. STOP! Read the safety information above very carefully.
2. Turn off all electric power to the appliance.
3. Turn the manual gas valve to the OFF position.