



NY Thermal Inc.
Tel: (506) 657-6000
Toll Free: 1-800-688-2575
Fax: 1-506-432-1135
Web: www.ntiboilers.com
Email: info@NTIBoilers.com

85206-1 (Replaces 85206)
Blower/Venturi/Gas Valve Assembly Replacement Instructions
Models: VM110, VM110P



This boiler must be serviced by a qualified boiler technician. Failure to properly maintain or service this appliance may result in property damage, serious injury or death.



The installation of this kit must be performed by a qualified boiler/gas technician. Installing this kit without the proper qualifications and training is hazardous and may result in property damage, serious injury or death.



Kit 85206-1 replaces 85206, and is necessary for replacing the blower on earlier model VM110 & VM110P boilers (serial numbers lower than 95975). See photos below.

Kit Contents

- 85379 Blower/Venturi Assembly
- 85642 Air Inlet Assembly (and 83655 90°)
- 82099 MJ Coupling
- 85446-1 LP Conversion Kit

Tools Required

- 10mm wrench
- 8mm wrench
- Pipe wrench (x2)
- #2 Phillips screwdriver

Technical Support

- For assistance, contact NTI Technical Services at 1-800-688-2575



85206 (Old)



85206-1 (New)



Kit 85206-1 is factory set to operate with Natural Gas; **BEFORE OPERATING WITH PROPANE**, the boiler must be converted using the *Natural Gas to LP Conversion Kit* included (P/N: 85446-1). Failure to properly convert the unit to safely operate with Propane will cause dangerous burner operation, resulting in property damage, serious injury or death.

Disassembly Instructions

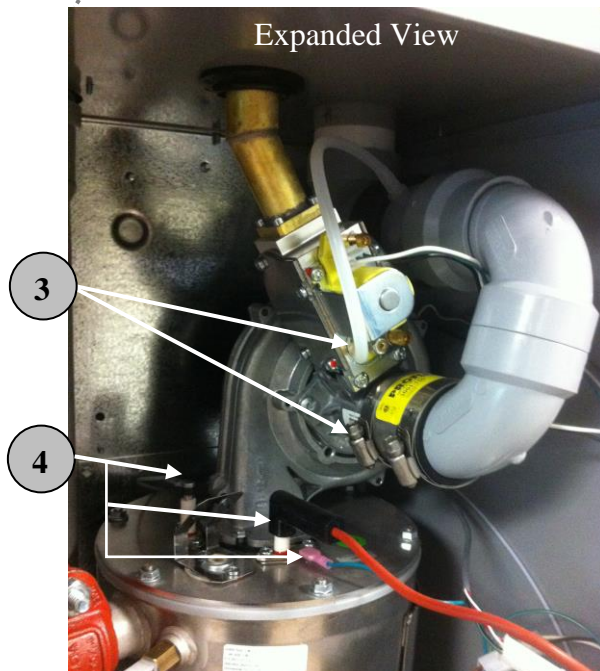
1. Turn off the power and gas to the boiler.
2. Disconnect the main gas line from the Gas Valve Adapter.



- 3 – Remove the Air Inlet Assembly.
 - Disconnect the silicone tube from the gas valve.
 - Loosen the clamps around the rubber coupling.
 - The Assembly can now be removed by gently pulling it out from the air inlet coupler and away from the venturi.

- 4 – Disconnect the wires on the flame sensor, igniter and igniter ground.

- 5 – Remove both the flame sensor and the igniter from the burner door.



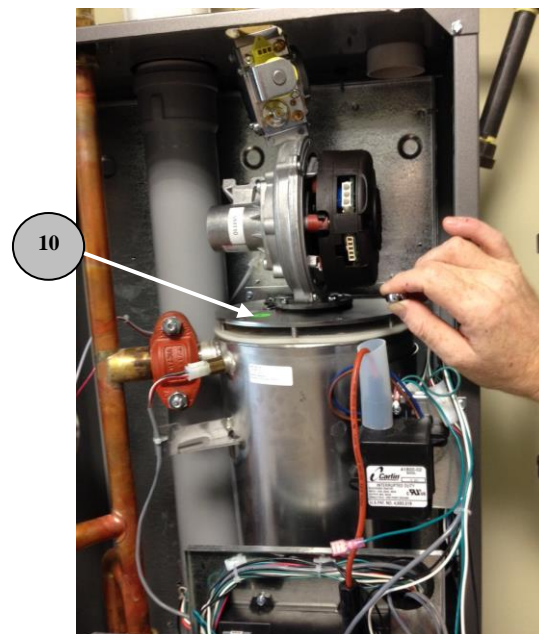
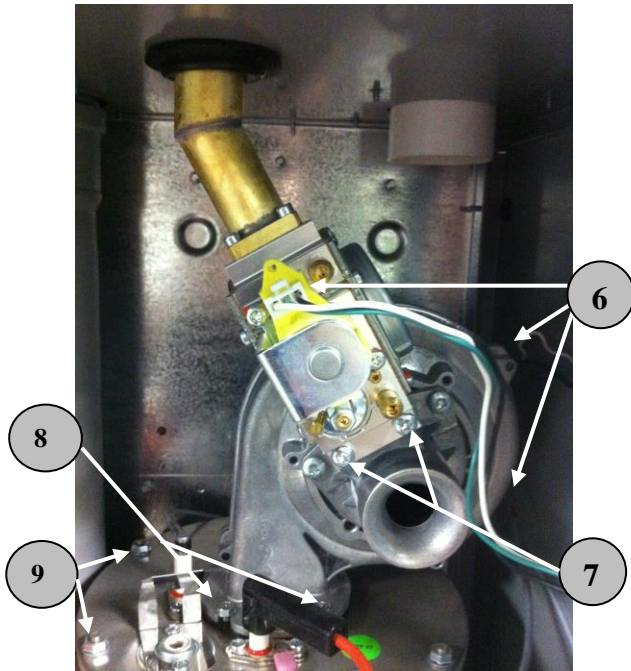
6 – Disconnect the power wires from the gas valve and blower. Disconnect the communication wire from the blower.

7 – Remove the 2 screws securing the gas valve.

8 – Remove the 2 front screws on the blower flange.

9 – Remove the 6 nuts securing the burner door.

10 – Gently lift the burner door assembly enough to clear the studs and rotate it 180° to access the rear screws on the blower flange. Remove the remaining 2 screws from the blower flange and remove the blower.



11 - Inspect the burner door refractory disk, the burner door gasket and the blower gasket for damage.

- See the Installation and Operation manual, Table 16-1 for refractory handling instructions.

⚠ WARNING

Operating the boiler with a damaged refractory disk or gaskets may cause fire or allow flue gases to escape, resulting in property damage, serious injury or death.

12 – Install new Blower/Venturi Assembly.

- Thread the blower gasket onto the flange with the screws to facilitate mounting to burner door.
85379 New Blower/Venturi Assembly.



13 – Complete the installation by following the disassembly instructions 1 through 10 in reverse, using the replacement parts.

⚠ WARNING

Ensure burner door and blower are torqued tight enough to compress their gaskets; over-torqueing may damage components and could result in property damage, serious injury or death.

NOTICE

Burner door torque spec is 4 lb. /ft.