

NTI Boilers Inc.  
 Tel: (506) 657-6000  
 Toll Free: 1-800-688-2575  
 Fax: 1-506-432-1135  
 Web: www.ntiboilers.com  
 Email: info@ntiboilers.com

## 86369-1 FTG 600-1400 High Gas Pressure Switch Replacement

### Applicable Boiler Models

- FTG 600-1400

### Kit Contents

- 2 each: 82998 Screw 8-18x0.375 Slot Hex Washer Head (10707-02683)
- 1 each: 84606 Disconnect Female 22-18 Pink Pico 2065-16
- 1 each: 85188 Disconnect Female Blue 16-14ga Nylon Insld Molex(19003-0050)
- 1 each: Complete assembly 86369 High Gas Pressure Switch GMH-A4-4-4 1-20 WC in (217326)
- 1 each: 86370 Hose Assembly Propane-Nat Gas CSA UL 45 Deg Female Flare 0.375x0.375x24 in Long Rubber (I4C24FS6FS6)
- 1 each: 86372 Elbow Brass 90 Deg 0.375 in Tube x 0.125 in MNPT



Figure 1

### Tools and Materials Required

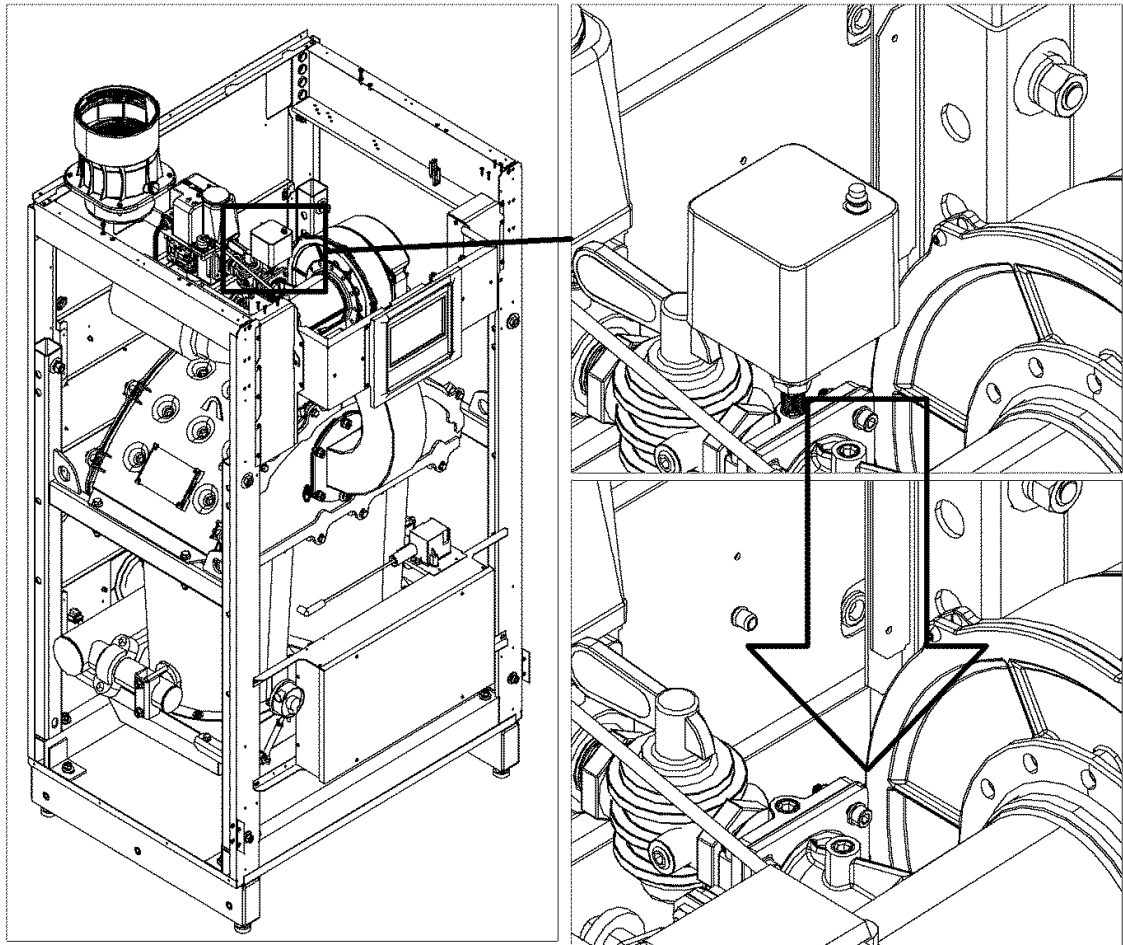
- ¼" Nut Driver
- Slotted screwdriver
- Wire cutter/stripper for #18AWG copper wire
- Quick disconnect crimping tool
- Gas-tight pipe thread sealant, for example WELD-ON® 505™ KEY TITE

### Replacement Instructions

- 1) Turn off **power** and **gas** to the boiler.

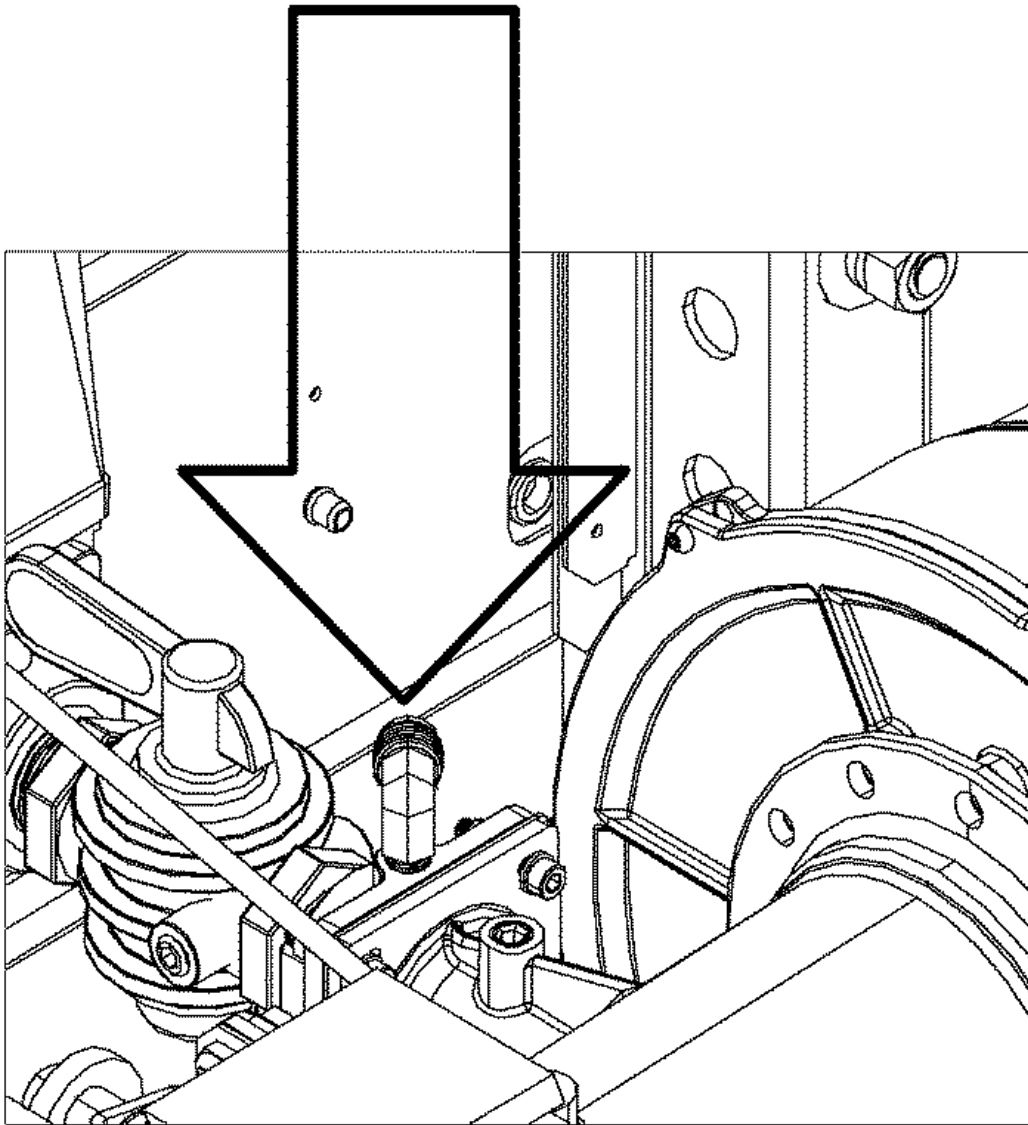
Remove clear cover from the existing high gas pressure switch mounted on pipe between gas valve and venturi mixer. Disconnect the yellow and blue wires (see Remove the existing high gas pressure switch and connecting fittings (see Figure 2)).

Figure 2



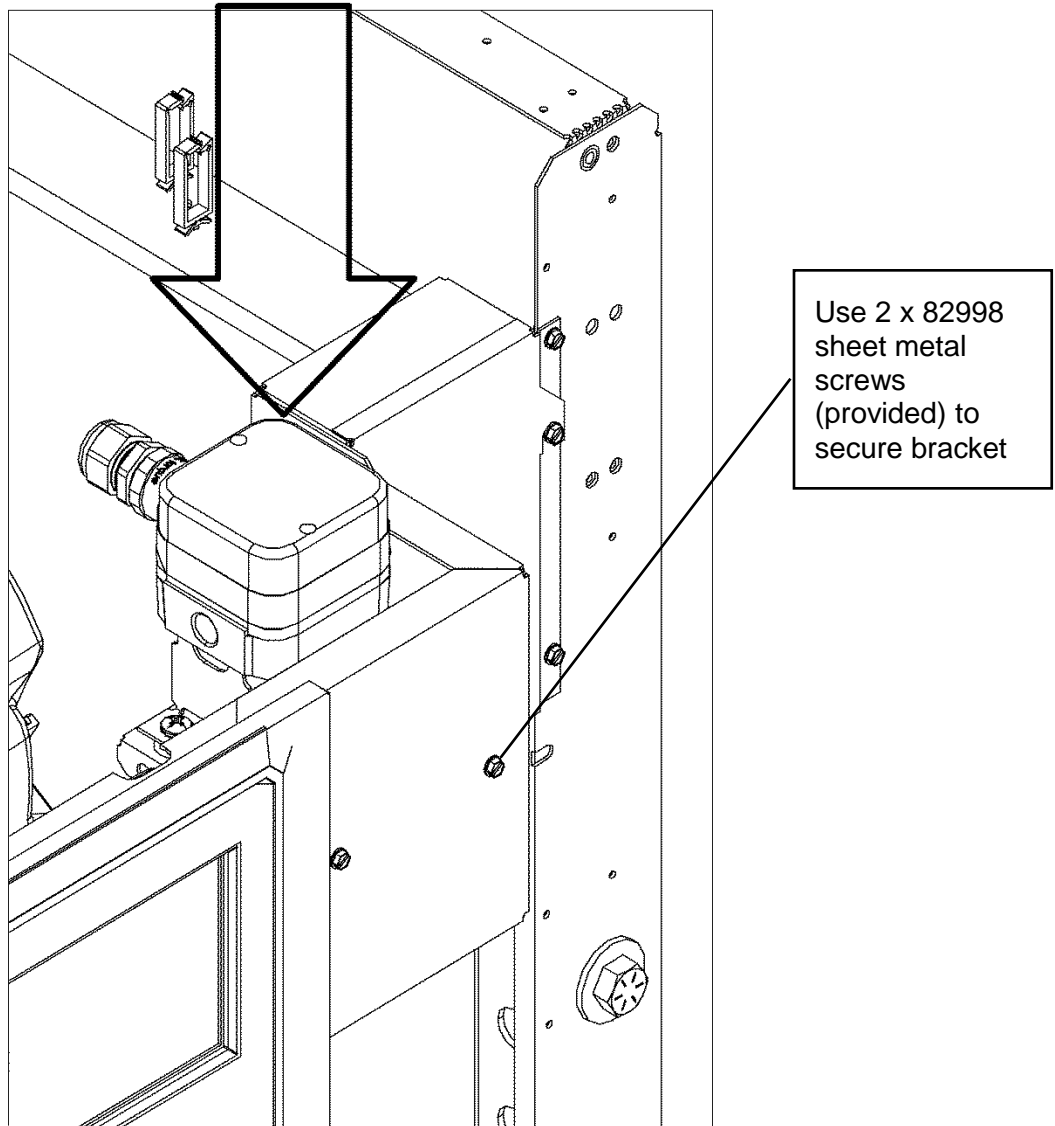
Using proper thread sealant, install 45 degree flare elbow fitting 86372 into 1/8" NPT tap on flange mounted on venturi mixer inlet (see Figure 3).

**Figure 3**



**Mount the high gas pressure switch assembly to back of display support, as illustrated in Figure 4.**

**Figure 4**



2) Connect wiring:

- a. Cut ferrule from two yellow wires that were disconnected in Step 2 above. Strip about 3/8" of jacket from both ends of yellow wires. Insert both wires into blue female quick disconnect and crimp securely (see Figure 5).

Securely crimp red female quick disconnect to stripped end of blue wire, which was disconnected in Step 2 above (see Figure 5).

**Figure 5**



Connect wires to their respective matching color wires from high gas pressure switch assembly (see Figure 6)

**Figure 6**



Securely attach gas hose 86370 to connect the elbow fitting installed in Step 4 above, to the elbow fitting attached to the high gas pressure switch (see Figure 7).

**Figure 7**



Ensure that the high gas pressure switch is set to 3" water column as illustrated in Figure 8.

**Figure 8**

